

# > HRSA Machining (Titanium & Super Alloy Machining)

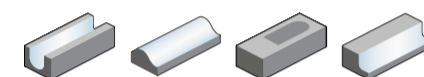
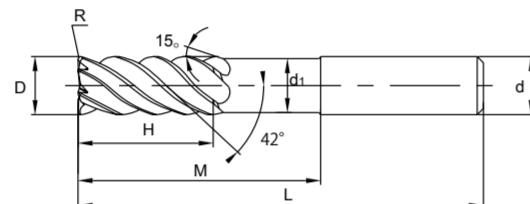
## ZCC-CT TM Series End Mills



### Features & Benefits

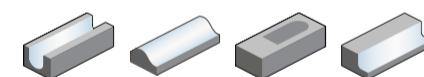
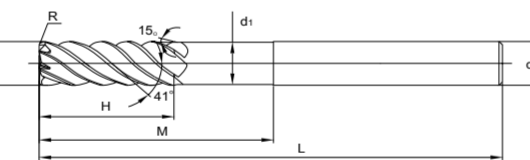
- > Roughing and finishing of titanium, nickel and cobalt based alloys
- > Specially ground for more cutting edge stability for demanding cutting jobs
- > Latest coating technology for thermal stability and wear resistance
- > Innovative substrate with optimized thermal conductivity and high level wear resistance
- > TM multi series with up to 9 cutting edges for outstanding productivity
- > Torus mills and ball nose cutters
- > Diameter range 6.0-25.0 mm

### TM-5RP End Mill



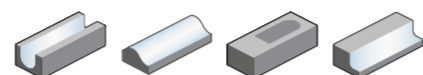
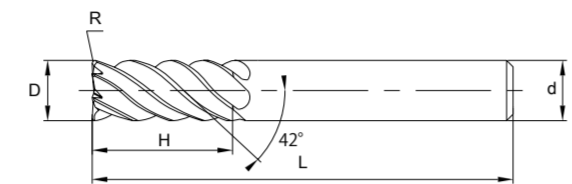
Code	Dimensions (mm)								Grade KMS405	List Price	Offer Price
	D	R	d (h6)	d1	H	M	L	Teeth			
TM-5RP-D8.0R0.3	8	0.3	8	7.4	16	25	75	5	●	59.32	41.52
TM-5RP-D8.0R0.5	8	0.5	8	7.4	16	25	75	5	●	59.32	41.52
TM-5RP-D8.0R0.75	8	0.75	8	7.4	16	25	75	5	●	59.32	41.52
TM-5RP-D8.0R1.0	8	1.0	8	7.4	16	25	75	5	●	59.32	41.52
TM-5RP-D10.0R0.5	10	0.5	10	9.4	20	32	75	5	●	69.90	48.93
TM-5RP-D10.0R0.75	10	0.75	10	9.4	20	32	75	5	●	69.90	48.93
TM-5RP-D10.0R1.0	10	1.0	10	9.4	20	32	75	5	●	69.90	48.93
TM-5RP-D10.0R1.25	10	1.25	10	9.4	20	32	75	5	●	69.90	48.93
TM-5RP-D10.0R1.5	10	1.5	10	9.4	20	32	75	5	●	69.90	48.93
TM-5RP-D10.0R1.6	10	1.6	10	9.4	20	32	75	5	●	69.90	48.93
TM-5RP-D10.0R2.0	10	2.0	10	9.4	20	32	75	5	●	69.90	48.93
TM-5RP-D10.0R2.5	10	2.5	10	9.4	20	32	75	5	●	69.90	48.93
TM-5RP-D10.0R3.0	10	3.0	10	9.4	20	32	75	5	●	69.90	48.93

### TM-7RP End Mill



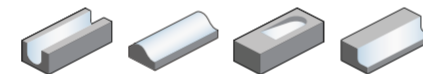
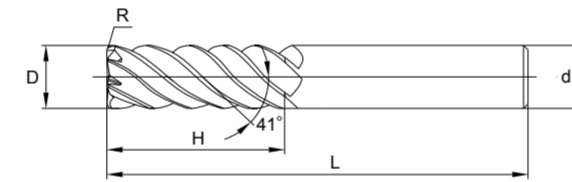
Code	Dimensions (mm)								Grade KMS405	List Price	Offer Price
	D	R	d (h6)	d1	H	M	L	Teeth			
TM-7RP-D12.0R0.5	12	0.5	12	11.4	24	40	90	7	●	124.78	87.35
TM-7RP-D12.0R0.75	12	0.75	12	11.4	24	40	90	7	●	124.78	87.35
TM-7RP-D12.0R1.0	12	1.0	12	11.4	24	40	90	7	●	124.78	87.35
TM-7RP-D12.0R1.25	12	1.25	12	11.4	24	40	90	7	●	124.78	87.35
TM-7RP-D12.0R1.5	12	1.5	12	11.4	24	40	90	7	●	124.78	87.35
TM-7RP-D12.0R1.6	12	1.6	12	11.4	24	40	90	7	●	124.78	87.35
TM-7RP-D12.0R2.0	12	2.0	12	11.4	24	40	90	7	●	124.78	87.35
TM-7RP-D12.0R2.5	12	2.5	12	11.4	24	40	90	7	●	124.78	87.35
TM-7RP-D12.0R3.0	12	3.0	12	11.4	24	40	90	7	●	124.78	87.35
TM-7RP-D12.0R3.2	12	3.2	12	11.4	24	40	90	7	●	124.78	87.35
TM-7RP-D12.0R4.0	12	4.0	12	11.4	24	40	90	7	●	124.78	87.35
TM-7RP-D16.0R1.0	16	1.0	16	15	32	50	100	7	●	193.18	135.23
TM-7RP-D16.0R1.25	16	1.25	16	15	32	50	100	7	●	193.18	135.23
TM-7RP-D16.0R1.5	16	1.5	16	15	32	50	100	7	●	193.18	135.23
TM-7RP-D16.0R1.6	16	1.6	16	15	32	50	100	7	●	193.18	135.23
TM-7RP-D16.0R2.0	16	2.0	16	15	32	50	100	7	●	193.18	135.23
TM-7RP-D16.0R2.5	16	2.5	16	15	32	50	100	7	●	193.18	135.23
TM-7RP-D16.0R3.0	16	3.0	16	15	32	50	100	7	●	193.18	135.23
TM-7RP-D16.0R3.2	16	3.2	16	15	32	50	100	7	●	193.18	135.23
TM-7RP-D16.0R4.0	16	4.0	16	15	32	50	100	7	●	193.18	135.23
TM-7RP-D16.0R5.0	16	5.0	16	15	32	50	100	7	●	193.18	135.23
TM-7RP-D16.0R6.3	16	6.3	16	15	32	50	100	7	●	193.18	135.23
TM-7RP-D20.0R1.0	20	1.0	20	19	35	60	110	7	●	323.16	226.21
TM-7RP-D20.0R1.25	20	1.25	20	19	35	60	110	7	●	323.16	226.21
TM-7RP-D20.0R1.5	20	1.5	20	19	35	60	110	7	●	323.16	226.21
TM-7RP-D20.0R1.6	20	1.6	20	19	35	60	110	7	●	323.16	226.21
TM-7RP-D20.0R2.0	20	2.0	20	19	35	60	110	7	●	323.16	226.21
TM-7RP-D20.0R2.5	20	2.5	20	19	35	60	110	7	●	323.16	226.21
TM-7RP-D20.0R3.0	20	3.0	20	19	35	60	110	7	●	323.16	226.21
TM-7RP-D20.0R3.2	20	3.2	20	19	35	60	110	7	●	323.16	226.21
TM-7RP-D20.0R4.0	20	4.0	20	19	35	60	110	7	●	323.16	226.21
TM-7RP-D20.0R5.0	20	5.0	20	19	35	60	110	7	●	323.16	226.21
TM-7RP-D20.0R6.3	20	6.3	20	19	35	60	110	7	●	323.16	226.21

### TM-5R End Mill



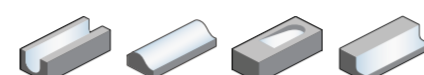
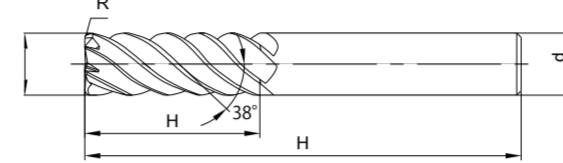
Code	Dimensions (mm)							Grade KMS405	List Price	Offer Price
	D	R	d (h6)	H	L	Teeth				
TM-5R-D6.0R0.3	6	0.3	6	16	50	5	●	30.28	21.20	
TM-5R-D6.0R0.5	6	0.5	6	16	50	5	●	30.28	21.20	
TM-5R-D6.0R0.75	6	0.75	6	16	50	5	●	30.28	21.20	
TM-5R-D6.0R1.0	6	1.0	6	16	50	5	●	30.28	21.20	
TM-5R-D8.0R0.3	8	0.3	8	20	60	5	●	49.30	34.51	
TM-5R-D8.0R0.5	8	0.5	8	20	60	5	●	49.30	34.51	
TM-5R-D8.0R0.75	8	0.75	8	20	60	5	●	49.30	34.51	
TM-5R-D8.0R1.0	8	1.0	8	20	60	5	●	49.30	34.51	
TM-5R-D10.0R0.5	10	0.5	10	25	75	5	●	64.80	45.36	
TM-5R-D10.0R0.75	10	0.75	10	25	75	5	●	64.80	45.36	
TM-5R-D10.0R1.0	10	1.0	10	25	75	5	●	64.80	45.36	
TM-5R-D10.0R1.25	10	1.25	10	25	75	5	●	64.80	45.36	
TM-5R-D10.0R1.5	10	1.5	10	25	75	5	●	64.80	45.36	
TM-5R-D10.0R1.6	10	1.6	10	25	75	5	●	64.80	45.36	
TM-5R-D10.0R2.0	10	2.0	10	25	75	5	●	64.80	45.36	
TM-5R-D10.0R2.5	10	2.5	10	25	75	5	●	64.80	45.36	
TM-5R-D10.0R3.0	10	3.0	10	25	75	5	●	64.80	45.36	

### TM-7R End Mill



Code	Dimensions (mm)							Grade KMS405	List Price	Offer Price
	D	R	d (h6)	H	L	Teeth				
TM-7R-D12.0R0.5	12	0.5	12	30	75	7	●	98.28	68.80	
TM-7R-D12.0R0.75	12	0.75	12	30	75	7	●	98.28	68.80	
TM-7R-D12.0R1.0	12	1.0	12	30	75	7	●	98.28	68.80	
TM-7R-D12.0R1.25	12	1.25	12	30	75	7	●	98.28	68.80	
TM-7R-D12.0R1.5	12	1.5	12	30	75	7	●	98.28	68.80	
TM-7R-D12.0R1.6	12	1.6	12	30	75	7	●	98.28	68.80	
TM-7R-D12.0R2.0	12	2.0	12	30	75	7	●	98.28	68.80	
TM-7R-D12.0R2.5	12	2.5	12	30	75	7	●	98.28	68.80	
TM-7R-D12.0R3.0	12	3.0	12	30	75	7	●	98.28	68.80	
TM-7R-D12.0R3.2	12	3.2	12	30	75	7	●	98.28	68.80	
TM-7R-D12.0R4.0	12	4.0	12	30	75	7	●	98.28	68.80	
TM-7R-D16.0R1.0	16	1.0	16	35	90	7	●	179.74	125.82	
TM-7R-D16.0R1.5	16	1.5	16	35	90	7	●	179.74	125.82	
TM-7R-D16.0R1.6	16	1.6	16	35	90	7	●	179.74	125.82	
TM-7R-D16.0R2.0	16	2.0	16	35	90	7	●	179.74	125.82	
TM-7R-D16.0R2.5	16	2.5	16	35	90	7	●	179.74	125.82	
TM-7R-D16.0R3.0	16	3.0	16	35	90	7	●	179.74	125.82	
TM-7R-D16.0R3.2	16	3.2	16	35	90	7	●	179.74	125.82	
TM-7R-D16.0R4.0	16	4.0	16	35	90	7	●	179.74	125.82	
TM-7R-D16.0R5.0	16	5.0	16	35	90	7	●	179.74	125.82	
TM-7R-D16.0R6.3	16	6.3	16	35	90	7	●	179.74	125.82	
TM-7R-D20.0R1.0	20	1.0	20	45	100	7	●	267.62	187.33	
TM-7R-D20.0R1.25	20	1.25	20	45	100	7	●	267.62	187.33	
TM-7R-D20.0R1.5	20	1.5	20	45	100	7	●	267.62	187.33	
TM-7R-D20.0R1.6	20	1.6	20	45	100	7	●	267.62	187.33	
TM-7R-D20.0R2.0	20	2.0	20	45	100	7	●	267.62	187.33	
TM-7R-D20.0R2.5	20	2.5	20	45	100	7	●	267.62	187.33	
TM-7R-D20.0R3.0	20	3.0	20	45	100	7	●	267.62	187.33	
TM-7R-D20.0R3.2	20	3.2	20	45	100	7	●	267.62	187.33	
TM-7R-D20.0R4.0	20	4.0	20	45	100	7	●	267.62	187.33	
TM-7R-D20.0R5.0	20	5.0	20	45	100	7	●	267.62	187.33	
TM-7R-D20.0R6.3	20	6.3	20	45	100	7	●	267.62	187.33	

### TM-9R End Mill



Code	Dimensions (mm)							Grade KMS405	List Price	Offer Price
	D	R	d (h6)	H	L	Teeth				
TM-9R-D25.0R1.0	25	1.0	25	50	110	9	●	554.46	388.12	
TM-9R-D25.0R1.25	25	1.25	25	50	110	9	●	554.46	388.12	
TM-9R-D25.0R1.5	25	1.5	25	50	110	9	●	554.46	388.12	
TM-9R-D25.0R1.6	25	1.6	25	50	110	9	●	554.46	388.12	
TM-9R-D25.0R2.0	25	2.0	25	50	110	9	●	554.46	388.12	
TM-9R-D25.0R2.5	25	2.5	25	50	110	9	●	554.46	388.12	
TM-9R-D25.0R3.0	25	3.0	25	50	110	9	●	554.46	388.12	
TM-9R-D25.0R3.2</										